



2024 SERVICE OFFERING

PLANNING A VISIT to the Gault Nature Reserve



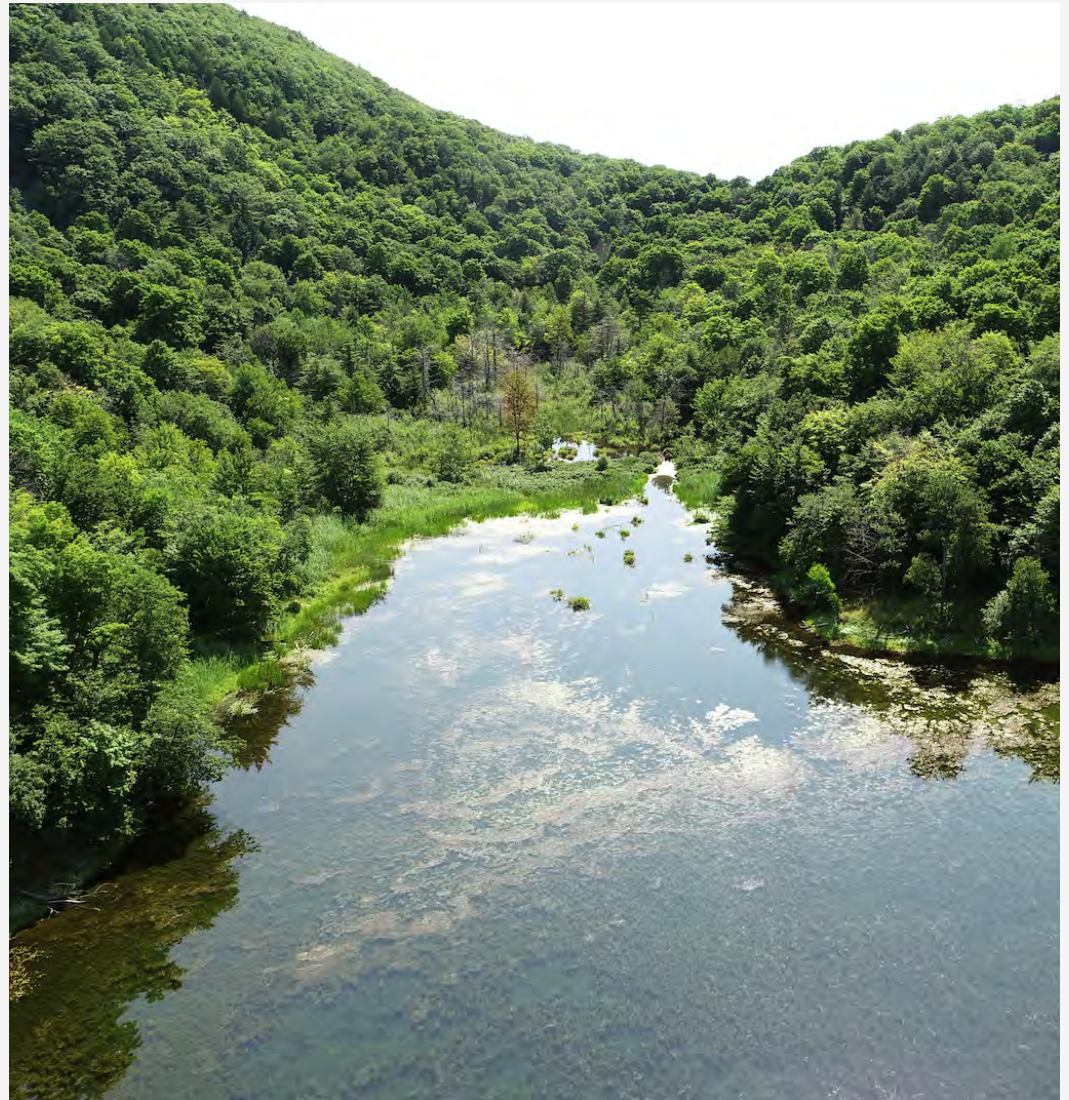
McGill

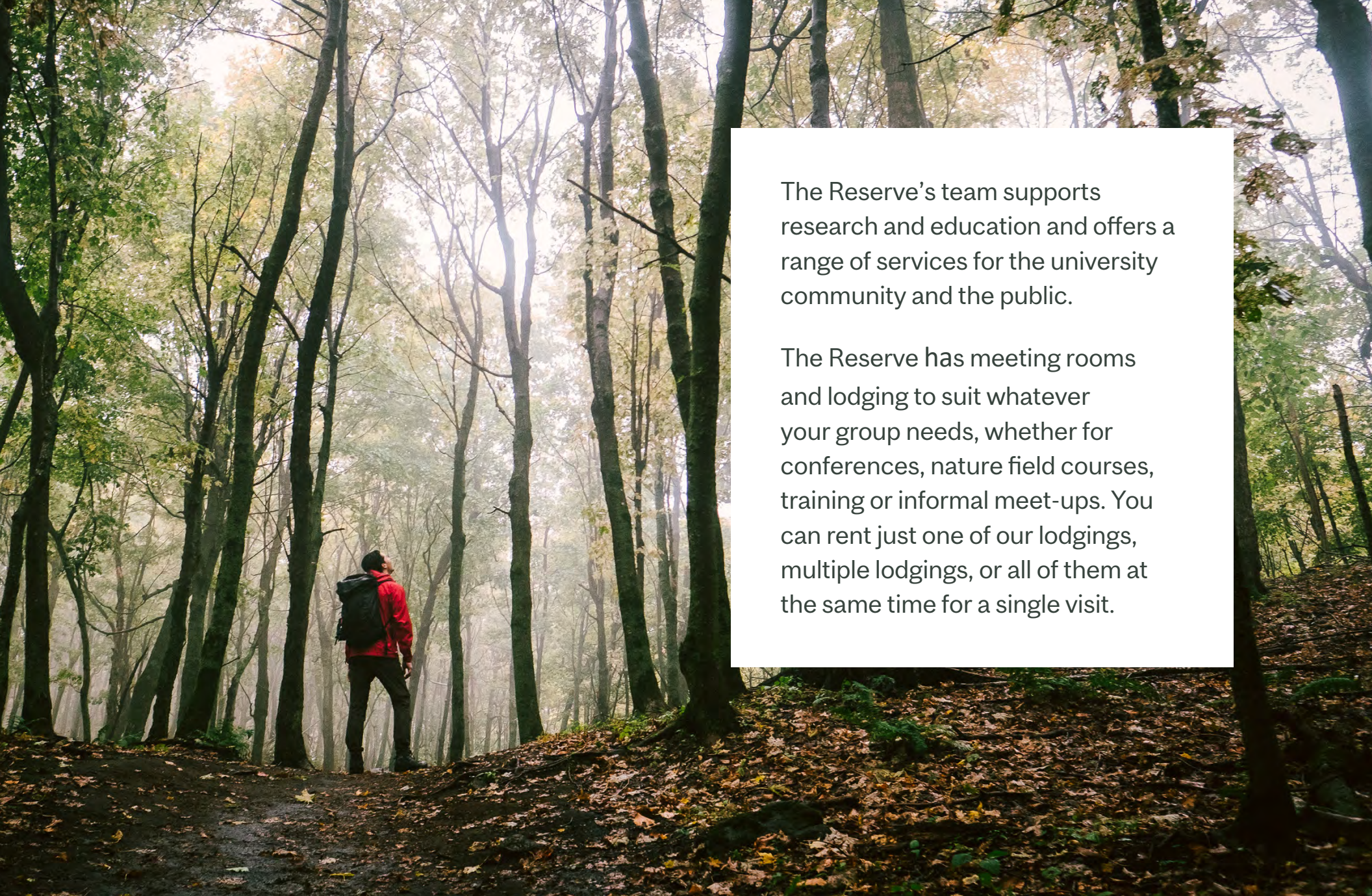
RÉSERVE NATURELLE
GAULT
NATURE RESERVE

TABLE OF CONTENTS

| | | | |
|---|----|----------------------|----|
| The Gault House _____ | 5 | Dining options _____ | 19 |
| The chalets _____ | 10 | Rates _____ | 21 |
| The cottage _____ | 16 | Contact us _____ | 23 |
| Research infrastructure and equipment _ | 18 | | |

The Gault Nature Reserve, owned by McGill University since 1958, is located in Mont Saint Hilaire in Montérégie and protects more than 1,000 hectares of natural habitats.





The Reserve's team supports research and education and offers a range of services for the university community and the public.

The Reserve has meeting rooms and lodging to suit whatever your group needs, whether for conferences, nature field courses, training or informal meet-ups. You can rent just one of our lodgings, multiple lodgings, or all of them at the same time for a single visit.



THE GAULT HOUSE

The Gault House is the perfect place to host a field course or group event. Your guests will enjoy a comfortable and productive stay in this spacious building.

The Gault House has 10 rooms and can accommodate up to 38 people.





COMMON SPACES

The main room of the house, the grand salon, can be set up however you like. When you rent the Gault House, you also get access to a sitting room, a library, a dining room and a classroom, as well as the lakeside patio with picnic tables and outdoor firepit (patio not available in winter).

The Gault House has a full audiovisual system.

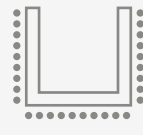
There is a fully equipped commercial kitchen for those who wish to cook on site. Access to the kitchen is optional—please refer to the Rates section for more information.



GRAND SALON

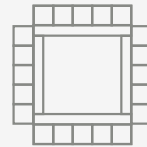
Capacity // 70 people
 Movable tables and chairs
 Dimensions // 18' x 35'

STYLE U



28

CONFERENCE



20

BANQUET



64

COCKTAIL



70

THEATER



70

CLASS



24

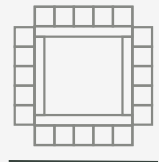




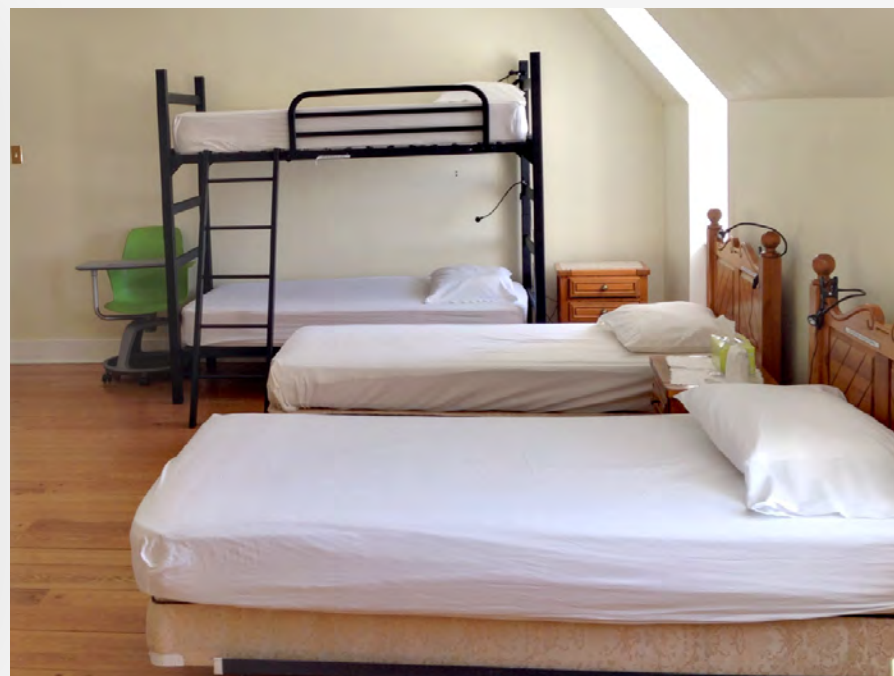
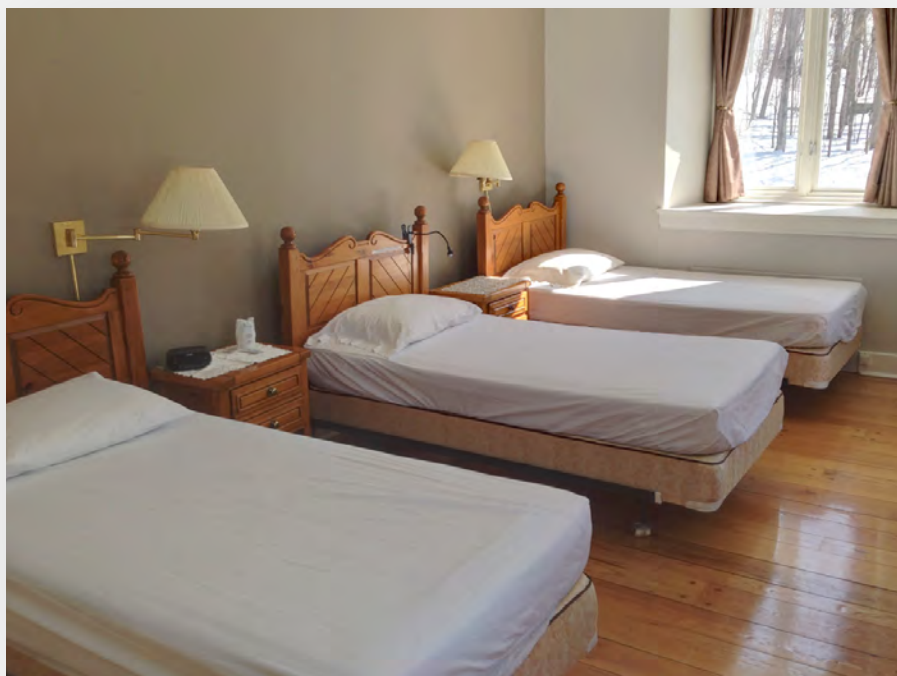
LIBRARY

Capacity // 10 people
Dimensions // 15' x 20'

CONFERENCE



10



ACCOMMODATIONS

The table below shows the different capacities of the rooms, which have a combination of bunk beds and single beds. Most of the bathrooms in the

Gault House are shared, but it is possible to book one of the two rooms with a private bathroom.

| | | | | | | | | | | | |
|----------------|-----|-----|-----|-----|-----|-----|-----|-----|-----|-----|-------|
| Room number | 107 | 109 | 110 | 201 | 202 | 203 | 204 | 205 | 206 | 207 | Total |
| Number of beds | 2 | 3 | 5 | 4 | 3 | 5 | 6 | 2 | 5 | 3 | 38 |

THE CHALETs

Located in the heart of the research area, the chalets are great for informal meetings, field courses or forest retreats. They are the most affordable lodging option, and you can book them with or without the meeting room.

The chalets are three distinct buildings connected by a large deck: two identical chalets and one meeting room. On the chalet grounds are picnic tables and an outdoor fire pit, as well as a barbecue available for rental on request.





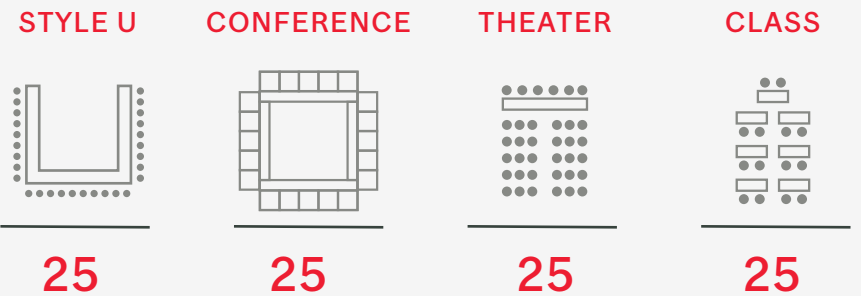
MAIN MEETING ROOM

Capacity // 25 people

Separate building (adjacent to the chalets)

Movable tables and chairs

Dimensions // 21' x 25'





The meeting room can be added to the rental of the chalets, providing a distinct meeting space. This building has a fully equipped commercial kitchen.





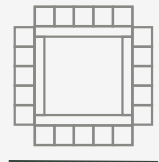
CHALETS (2)

Capacity // 10 people each

Conference table and sitting room

Dimensions // 13' x 29'

CONFERENCE



10



ACCOMMODATIONS

Each chalet can accommodate up to 16 people and has four rooms, a kitchen, a sitting room and two bathrooms.

Each building has a projection screen and can be outfitted with a projector upon request.

You can rent one or two chalets, with or without the meeting room.





THE COTTAGE

The cottage, located near Lake Hertel, can accommodate four people. It has two rooms, a shared bathroom, a small living room and a fully equipped kitchenette.





RESEARCH INFRASTRUCTURE AND EQUIPMENT

The Gault Nature Reserve has plenty to offer to researchers and students. As well as the classroom, visitors can access equipment for scientific research. This includes an experimental dock, small watercraft that can travel on Lake Hertel and various laboratories.

If you would like to access this infrastructure for a field course, or if you would like to submit a research project, please fill out this [online form](#).



DINING OPTIONS

Each of our buildings has a fully equipped kitchen where meals can be prepared. This is the most affordable option. For those who prefer turnkey service, catering is also available.





KITCHEN ACCESS:

- // Bring your own food
- // Access to the dining room, patio, dishes and kitchen equipment is included
- // You are responsible for preparing, serving and cleaning up after your meals
- // No service charges
- // Kitchen access is included in the room rental rate, except for the Gault House



FULL-SERVICE CATERING:

- // Meals delivered on-site
- // Buffet set up and cleanup done by a member of our team
- // Access to the dining room and patio
- // A service charge of 15% of the meal cost

QUESTIONS?

Reach us at
service@reservegault.ca

Gault Nature Reserve
422 chemin des Moulins
Mont-Saint-Hilaire (Québec)
J3G 4S6

gault.mcgill.ca/en/meeting-and-lodging

